

**This electronic collection of documents is provided
for the convenience of the user
and is Not a Certified Document –**

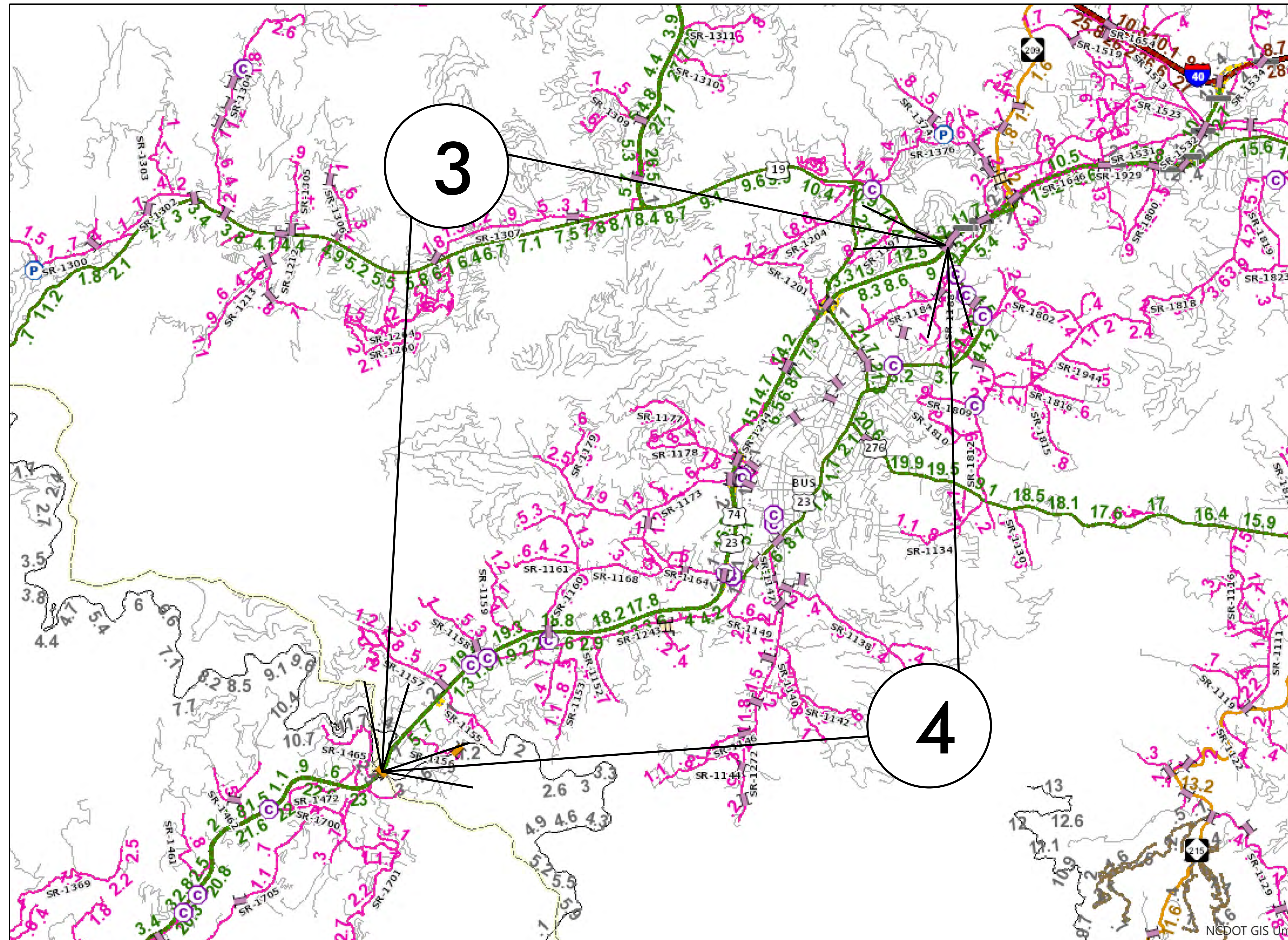
**The documents contained herein were originally issued
and sealed by the individuals whose names and license
numbers appear on each page, on the dates appearing
with their signature on that page.**

**This file or an individual page
shall not be considered a certified document.**

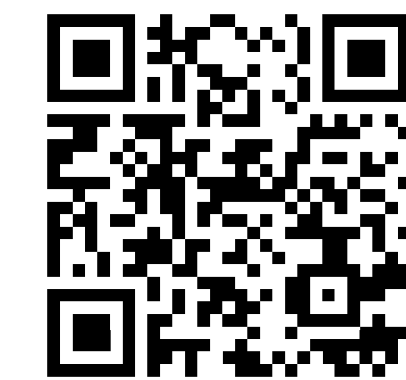
END

HAYWOOD COUNTY

STATE	STATE PROJECT REFERENCE NO.		SHEET NO.	TOTAL SHEETS
N.C.	49336		2	
STATE PROJ. NO.		F. A. PROJ. NO.	DESCRIPTION	
49336.1.6		0074248	PE	
49336.3.6		0074248	CONSTRUCTION	



MAP 3



BEG



END

MAP 4



BEG



END

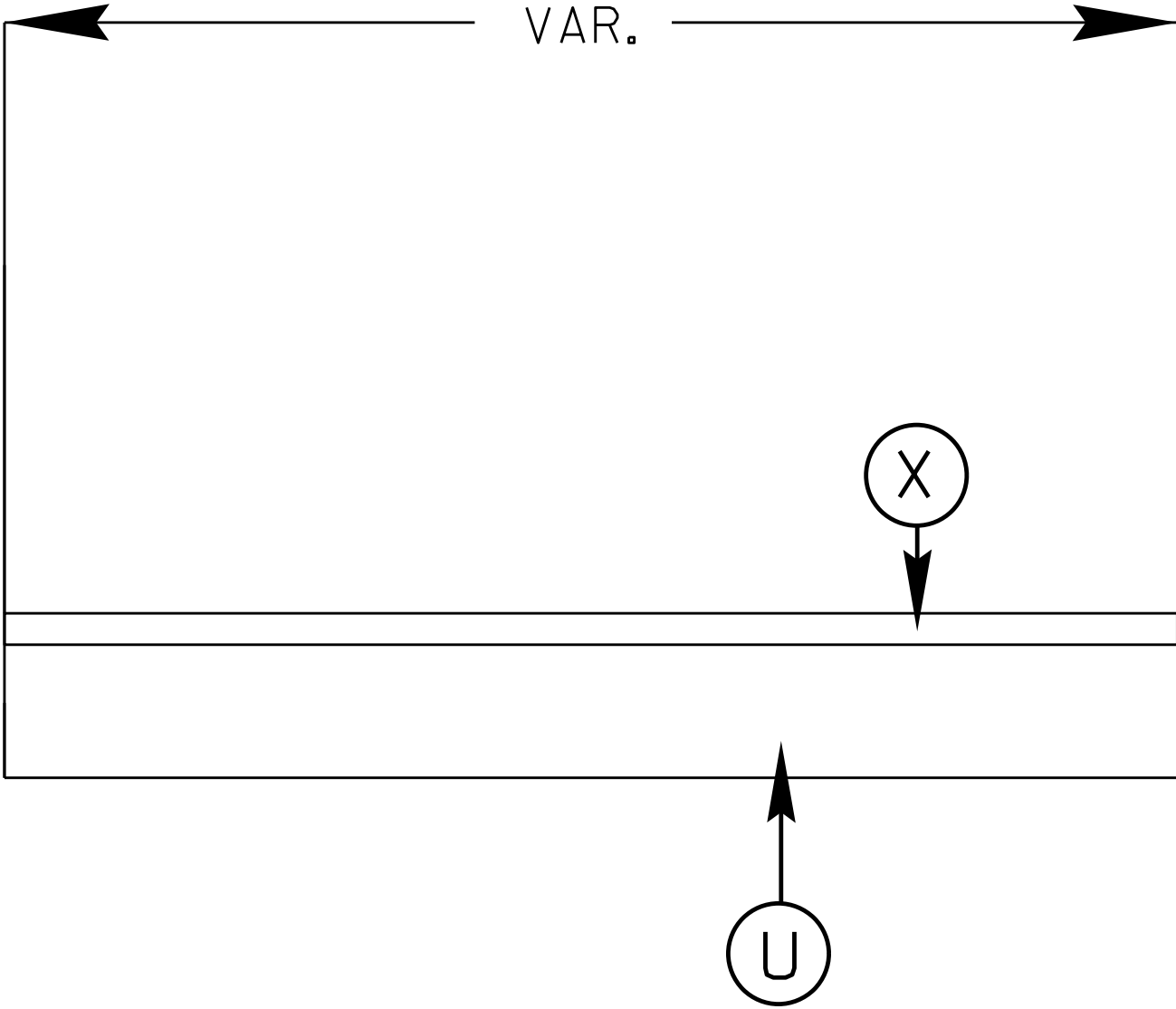
09/08/09

TIP PROJECT: HS-2014E

CONTRACT: DN01006

STATE	STATE PROJECT REFERENCE NO.	SHEET NO.	TOTAL SHEETS
N.C.	49336	3	
STATE PROJ. NO.	F. A. PROJ. NO.	DESCRIPTION	
49336.1.6	0074248	PE	
49336.3.6	0074248	CONSTRUCTION	

TYPICAL 1



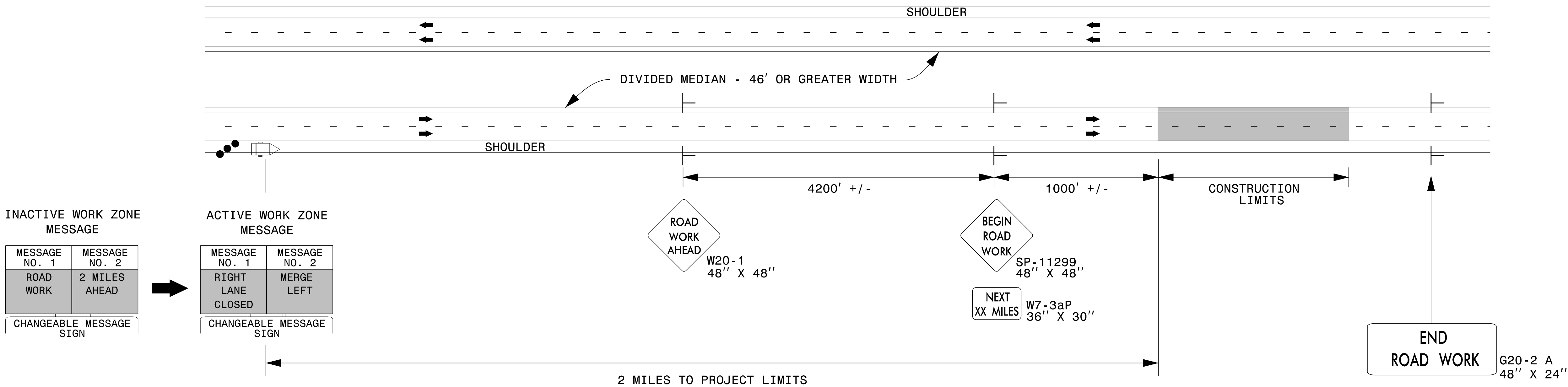
SURFACING SCHEDULE

ITEM NO	DESCRIPTION
U	EXISTING ASPHALT
X	PAVEMENT TEXTURING

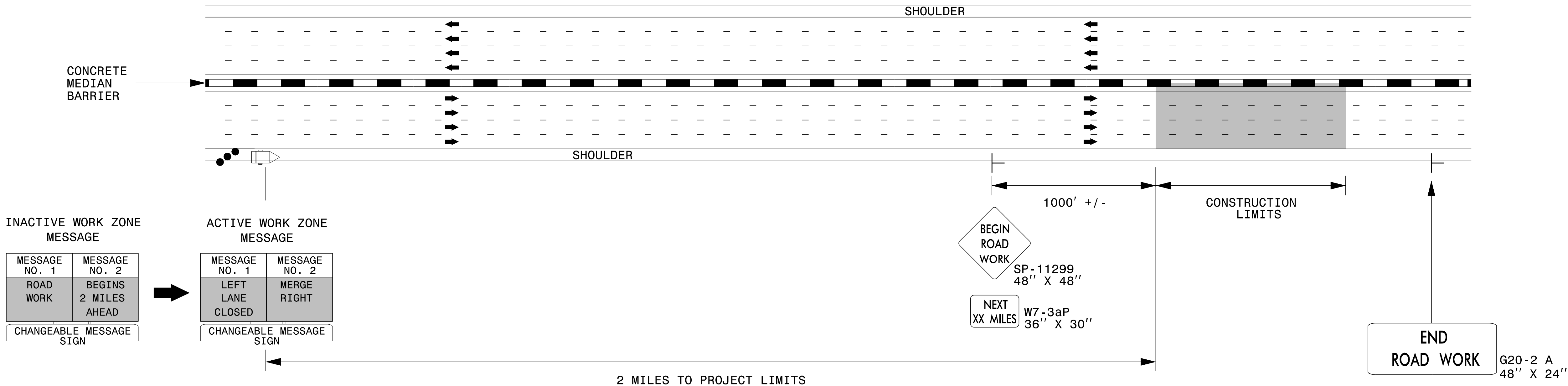
SUMMARY OF QUANTITIES

Map #	Route No.	Road Name	From MM	To MM	Lane Width	Pavement Texturing (SY)
1	US 74 West	Hwy 74 West	13.29	15.35	2 - 12'	29100
2	US 74 East	Hwy 74 East	6.62	8.68	2 - 12'	29100
3	US 74 West	Hwy 74 West	12.05	21.33	2 - 12'	131000
4	US 74 East	Hwy 74 East	0.02	9.29	2 - 12'	131000

DIVIDED MEDIANS WITH WIDTHS 46' OR GREATER



DIVIDED MEDIANS WITH WIDTHS LESS THAN 46' OR WITH PERMANENT MEDIAN BARRIER



- NOTES:**
- 1) LATERAL CLEARANCE AT ALL SIGN LOCATIONS SHALL BE 6' AS MEASURED FROM THE EDGE OF PAVEMENT.
 - 2) MOUNT SIGNS THAT ARE LARGER THAN 10 SQUARE FEET IN AREA ON TWO OR MORE WOOD OR U-CHANNEL SUPPORTS. PERFORATED SQUARE TUBING SUPPORT SYSTEMS MAY SUPPORT LARGER AREAS ON A SINGLE SUPPORT. FOLLOW MANUFACTURER'S RECOMMENDATIONS. THESE SYSTEMS SHALL BE NCHRP 350 COMPLIANT AND NCDOT APPROVED.
 - 3) FOR MEDIAN WIDTHS LESS THAN 46' (MEASURED EDGELINE TO EDGELINE) USE THE BOTTOM DRAWING.
 - 4) IF STATIONARY GENERAL WARNING SIGNS ARE USED, THEY WILL BE PAID FOR PER SECTION 104 OF THE NCDOT STANDARD SPECIFICATIONS AS EXTRA WORK.
 - 5) INSTALL "ROAD WORK AHEAD" (W20-1) ALONG ENTRANCE RAMP 500' PRIOR TO RAMP TERMINAL, AND "END ROAD WORK" (G20-2a) AT THE END OF EXIT RAMP WITHIN THE WORK ZONE.
 - 6) IF MILLED AREAS ARE NOT PAVED BACK BY THE END OF THE WORK DAY, PORTABLE SIGNS SHALL BE USED TO WARN DRIVERS OF THE PRESENT CONDITIONS. THESE ARE TO INCLUDE, BUT NOT LIMITED TO "ROUGH ROAD" W8-8, "UNEVEN LANES" W8-11, "GROOVED PAVEMENT" W8-15 w/MOTORCYCLE PLAQUE MOUNTED BELOW. THESE ARE TO BE DOUBLE INDICATED ON MULTI-LANE ROADWAYS WITH SPEED LIMITS 45 MPH AND GREATER AND WITH DIVIDED MEDIANS OF 46' OR GREATER. THESE PORTABLE SIGNS ARE INCIDENTAL TO THE OTHER ITEMS OF WORK INCLUDED IN THE TEMPORARY TRAFFIC CONTROL (LUMP SUM) PAY ITEM.

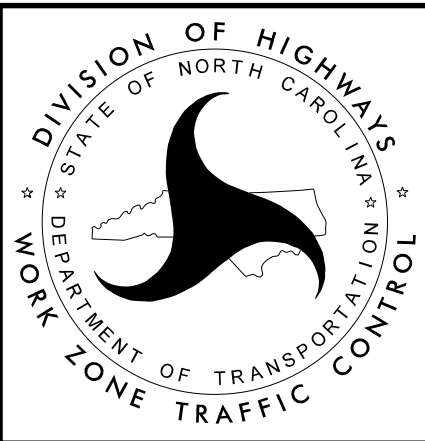
LEGEND

CHANGEABLE MESSAGE SIGN (CMS)

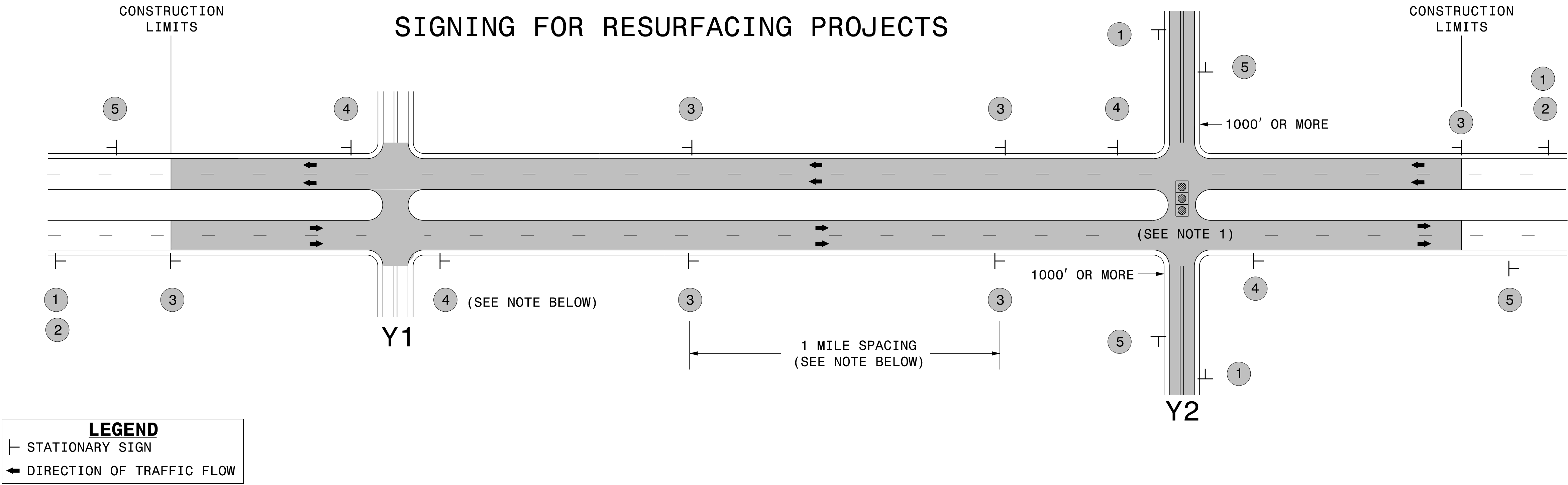
STATIONARY SIGN

DIRECTION OF TRAFFIC FLOW

TRAFFIC DRUM



RESURFACING ADVANCE
WARNING SIGNS FOR
HIGH SPEED FACILITIES
≥ 60 MPH



MAINLINE (-L-) SIGNING

-Y- LINE SIGNING

SIGNING NOTES AND PLACEMENT PER DIRECTION	<div>1</div> <div>2</div> <div><div>ROAD WORK AHEAD</div><div>W20-1 48" X 48"</div><div>NEXT XX MILES</div><div>W7-36P 24" X 18"</div></div> <div>PLACE 1000' PRIOR TO BEGINNING OF CONSTRUCTION LIMITS. ONLY USED ON -Y- LINES IF RESURFACING LIMITS EXTEND 1000' ALONG -Y- LINE.</div> <div>#2 SIGN ONLY USED WHEN RESURFACING LIMITS ARE 2 OR MORE MILES IN LENGTH. ROUND UP TO NEXT WHOLE NUMBER.(NO FRACTIONAL OR DECIMAL NUMBERS)</div>	<div>NO REQUIRED STATIONARY SIGNING FOR THE FOLLOWING -Y- LINE CONDITIONS:</div> <div>1) LESS THAN 1000' OF RESURFACING ALONG -Y- LINE</div> <div>2) SUBDIVISION ROADS</div> <div>3) DEAD END ROADS</div> <div>WHEN PAVING/CONSTRUCTION ACTIVITIES PROCEED ACROSS AN UNSIGNED -Y- LINE, ADVANCE WARNING PORTABLE SIGNS SHALL BE USED ALONG THE -Y- LINE AS SHOWN BELOW. REMOVE UPON COMPLETION OF WORK.</div> <div><div>ROAD WORK AHEAD</div><div>W20-1 48" X 48"</div><div>PLACED 500' IN ADVANCE OF FLAGGER.</div><div><div>ROAD WORK AHEAD</div><div>W20-7 A 48" X 48"</div><div>PLACED 250' IN ADVANCE OF FLAGGER.</div></div><div>NOTES:</div><div>1) MAY USE LAW ENFORCEMENT TO CONTROL TRAFFIC AT SIGNALIZED INTERSECTIONS AS DIRECTED BY THE ENGINEER. PROVIDE PORTABLE "ROAD WORK AHEAD" (W20-1) SIGNS 500' IN ADVANCE ALONG BOTH APPROACHES FROM THE SIDE STREETS WHEN PAVING PROCEEDS THROUGH THE INTERSECTION.</div></div>
	<div>3</div> <div><div>LOW/SOFT SHOULDER</div><div>SP 13107 48" X 48"</div></div> <div>PLACE INITIALLY AT THE CONSTRUCTION LIMITS AND SPACED 1 MILE APART THEREAFTER. IF NO -Y- LINES EXIST, PLACE 2ND SET 1/2 MILE FROM THE CONSTRUCTION LIMITS AND THEN SPACE 1 MILE THEREAFTER.</div>	
	<div>4</div> <div><div>ROAD UNDER CONST</div><div>SP 13106 48" X 48"</div></div> <div>THESE ARE FOR -Y- LINES THAT ARE "THROUGH" ROADWAYS. DEAD END AND SUBDIVISION ROADS ARE NOT "THROUGH" ROADWAYS. INSTALL 500' +/- FROM EACH -Y- LINE APPROACH AS SHOWN ABOVE. FOR MULTIPLE -Y- LINES THAT ARE SEPARATED BY 0.25 MILES OR LESS, TREAT AS A SINGLE UNIT AND INSTALL WITHIN 500' OF EACH APPROACH. A MAXIMUM OF 2 SIGN SETS PER MILE. DO NOT INSTALL WHEN -Y- LINES ARE WITHIN 0.5 MILES FROM "END ROAD WORK" SIGN.</div>	
	<div>5</div> <div><div>END ROAD WORK</div><div>G20-2 A 48" X 24"</div></div> <div>PLACE 500' FOLLOWING THE END OF CONSTRUCTION LIMITS.</div>	